





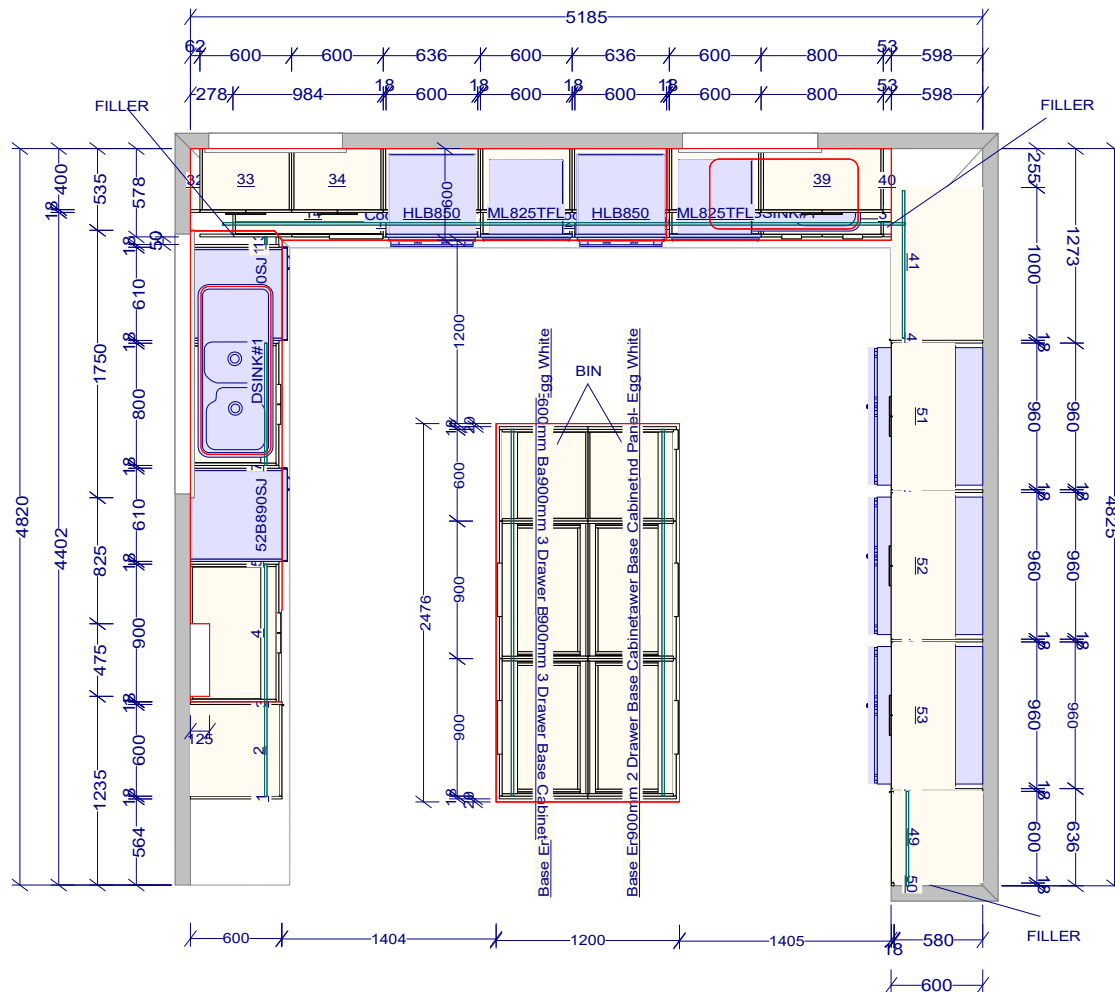
Note: This drawing is an artistic interpretation of the general appearance of the design. It is not meant to be an exact rendition.		Designed: 19/01/2024 Printed: 19/01/2024



<p>Note: This drawing is an artistic interpretation of the general appearance of the design. It is not meant to be an exact rendition.</p>		<p>Designed: 19/01/2024 Printed: 19/01/2024</p>	
<p>Mark TM V5 IB</p>	<p>All</p>	<p>Drawing #: 1</p>	



<p>Note: This drawing is an artistic interpretation of the general appearance of the design. It is not meant to be an exact rendition.</p>		<p>Designed: 19/01/2024 Printed: 19/01/2024</p>
<p>Mark TM V5 IB</p>	<p>All</p>	<p>Drawing #: 1</p>



Legend

- 1: Pantry End Panel- Egg White
- 2: 600mm Pantry
- 3: Pantry End Panel- Egg White
- 4: 900mm Base Cabinet
- 5: Base End Panel- Egg White
- 7: Base End Panel- Egg White
- 8: 800mm Base Cabinet
- 9: Base End Panel - Egg White
- 12: Base End Panel - Egg White
- 13: Base Filler Panel- Egg White
- 14: 1000mm Blind Corner Base Cabinet
- 15: Wall End Panel- Egg White
- 16: 600mm Oven Cabinet
- 19: Wall End Panel- Egg White
- 20: Underbench Microwave Cabinet
- 22: Wall End Panel- Egg White
- 23: 600mm Oven Cabinet
- 26: Wall End Panel- Egg White
- 27: Underbench Microwave Cabinet
- 29: 800mm Base Cabinet
- 31: Base Filler Panel- Egg White
- 32: Wall Filler Panel - 550mm- Egg White
- 33: 600mm Medium Wall Cabinet
- 34: 600mm Medium Wall Cabinet
- 35: 636mm Medium Wall Cabinet
- 36: 600mm Medium Wall Cabinet
- 37: 636mm Medium Wall Cabinet
- 38: 600mm Medium Wall Cabinet
- 39: 800mm Medium Wall Cabinet
- 40: Wall Filler Panel - 550mm- Egg White
- 41: 1000mm Blind Corner Pantry
- 42: Pantry End Panel- Egg White
- 43: Pantry End Panel- Egg White
- 44: Pantry End Panel - Egg White
- 46: Pantry End Panel - Egg White
- 48: Pantry End Panel- Egg White
- 49: 600mm Pantry
- 50: Tall Filler Panel- Egg White
- 51: 960mm Overhead Cabinet
- 52: 960mm Overhead Cabinet
- 53: 960mm Overhead Cabinet

CONCEPT DRAWING

Based on customers plan or own measurements, not fit for accuracy until measured

Any incorrect measurements supplied are customer responsibility

Bunnings offers a \$99 in home design service to confirm all measurements required, the amount is transferred to the purchase of your kitchen once you proceed

STANDARD OVERALL MEASUREMENT OF CABINETS IS 2200MM HIGH this means that bulk head above cabinets will need to be adjusted installer to provide bulk head to suit space between ceiling and wall cabinets

Filler= balance of wall measurement, cut from 100mm blank

2x Wall End Panels to be installed either side of 600mm Oven Cabinet

APPLIANCE SIZES USED ON PLAN

OVEN: 600MM UNDER BENCH

COOK TOP: 600MM GAS

RANGE HOOD: 600MM UNDERMOUNT

DISHWASHER: 610MM OPENING

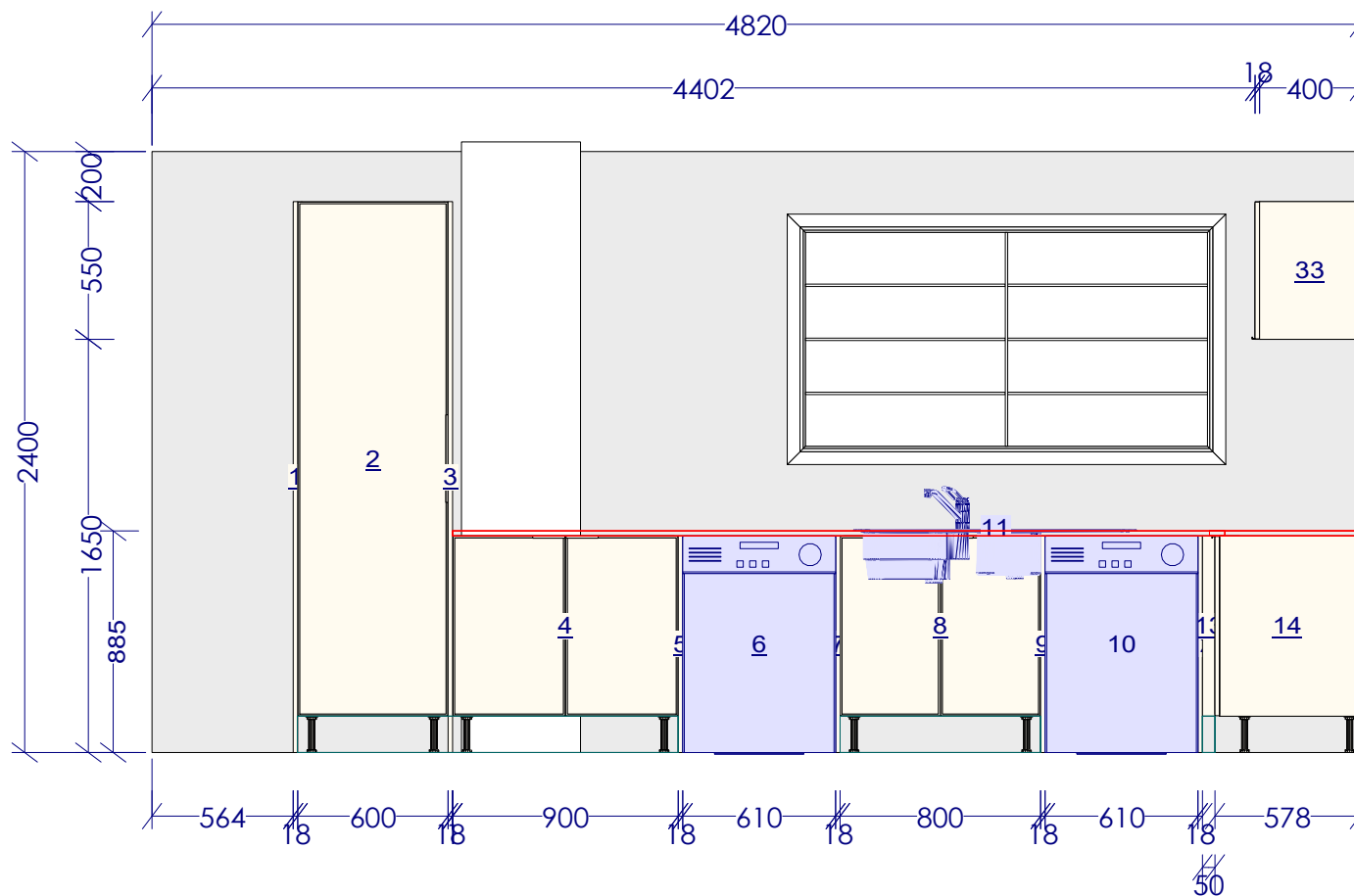
REFRIGERATOR: 960MM OPENING

All dimensions size designations given are subject to verification on job site and adjustment to fit job conditions.



This is an original design and must not be released or copied unless applicable fee has been paid or job order placed.

Designed: 19/01/2024
Printed: 19/01/2024



Legend

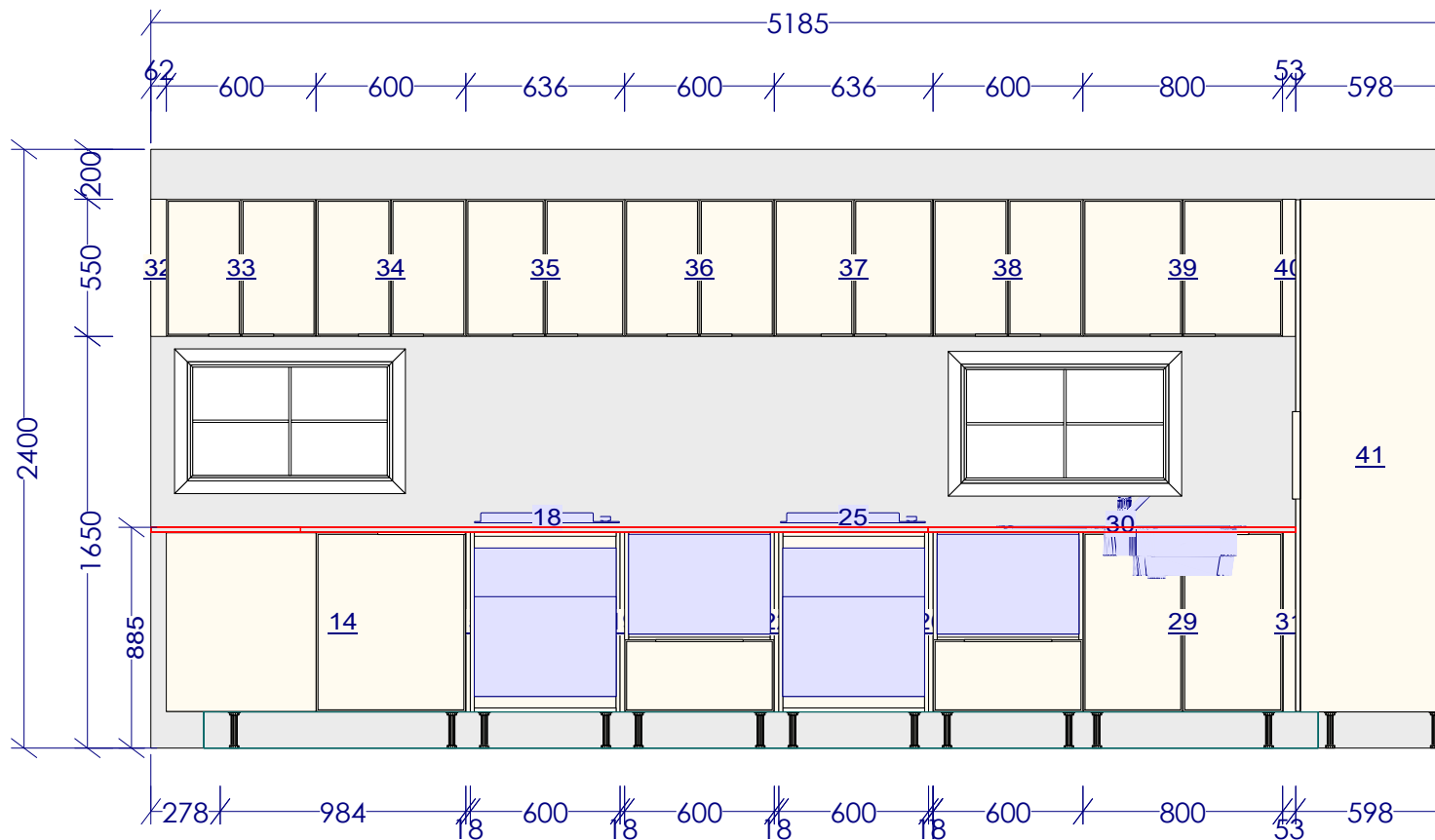
- 1: Pantry End Panel- Egg White
- 2: 600mm Pantry
- 3: Pantry End Panel- Egg White
- 4: 900mm Base Cabinet
- 5: Base End Panel- Egg White
- 6: 52B890SJ
- 7: Base End Panel- Egg White
- 8: 800mm Base Cabinet
- 9: Base End Panel - Egg White
- 10: 52B890SJ
- 11: DSINK#1
- 12: Base End Panel - Egg White
- 13: Base Filler Panel- Egg White
- 14: 1000mm Blind Corner Base Cabinet
- 32: Wall Filler Panel - 550mm- Egg White
- 33: 600mm Medium Wall Cabinet

All dimensions size designations given are subject to verification on job site and adjustment to fit job conditions.



This is an original design and must not be released or copied unless applicable fee has been paid or job order placed.

Designed: 19/01/2024
Printed: 19/01/2024



Legend

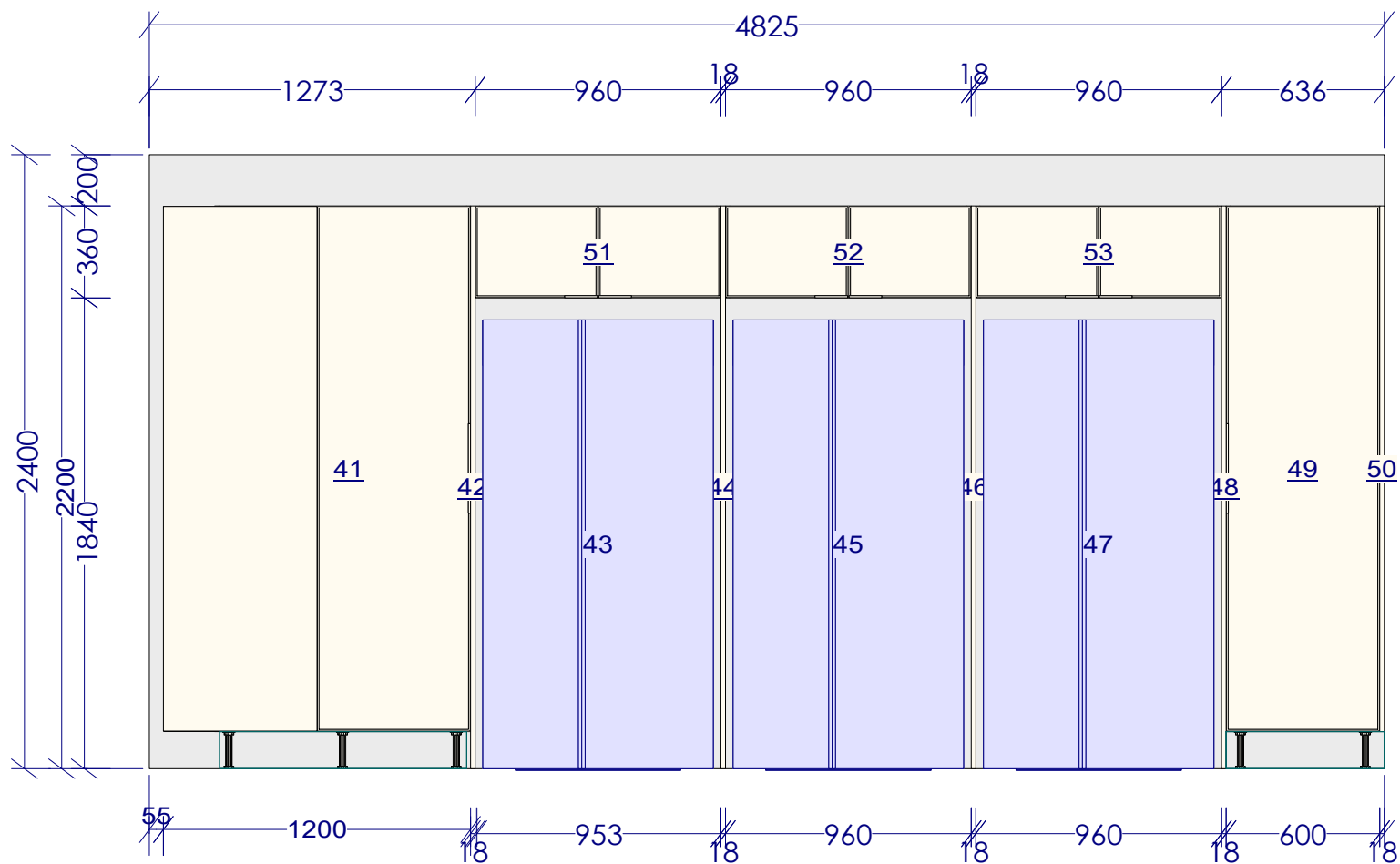
- 10: 52B890SJ
- 14: 1000mm Blind Corner Base Cabinet
- 15: Wall End Panel- Egg White
- 16: 600mm Oven Cabinet
- 17: HLB850
- 18: Cooktop Gas 60cm
- 19: Wall End Panel- Egg White
- 20: Underbench Microwave Cabinet
- 21: ML825TFL
- 22: Wall End Panel- Egg White
- 23: 600mm Oven Cabinet
- 24: HLB850
- 25: Cooktop Gas 60cm
- 26: Wall End Panel- Egg White
- 27: Underbench Microwave Cabinet
- 28: ML825TFL
- 29: 800mm Base Cabinet
- 30: SSINK#1
- 31: Base Filler Panel- Egg White
- 32: Wall Filler Panel - 550mm- Egg White
- 33: 600mm Medium Wall Cabinet
- 34: 600mm Medium Wall Cabinet
- 35: 636mm Medium Wall Cabinet
- 36: 600mm Medium Wall Cabinet
- 37: 636mm Medium Wall Cabinet
- 38: 600mm Medium Wall Cabinet
- 39: 800mm Medium Wall Cabinet
- 40: Wall Filler Panel - 550mm- Egg White
- 41: 1000mm Blind Corner Pantry

All dimensions size designations given are subject to verification on job site and adjustment to fit job conditions.




This is an original design and must not be released or copied unless applicable fee has been paid or job order placed.

Designed: 19/01/2024
Printed: 19/01/2024



- Legend
- 41: 1000mm Blind Corner Pantry
 - 42: Pantry End Panel- Egg White
 - 43: SSM6100MA
 - 44: Pantry End Panel- Egg White
 - 45: SSM6100MA
 - 46: Pantry End Panel - Egg White
 - 47: SSM6100MA
 - 48: Pantry End Panel- Egg White
 - 49: 600mm Pantry
 - 50: Tall Filler Panel- Egg White
 - 51: 960mm Overhead Cabinet
 - 52: 960mm Overhead Cabinet
 - 53: 960mm Overhead Cabinet

All dimensions _size designations given are subject to verification on job site and adjustment to fit job conditions.		This is an original design and must not be released or copied unless applicable fee has been paid or job order placed.	Designed: 19/01/2024 Printed: 19/01/2024	
Mark TM V5 IB		EI 3	Drawing #: 1	No Scale.